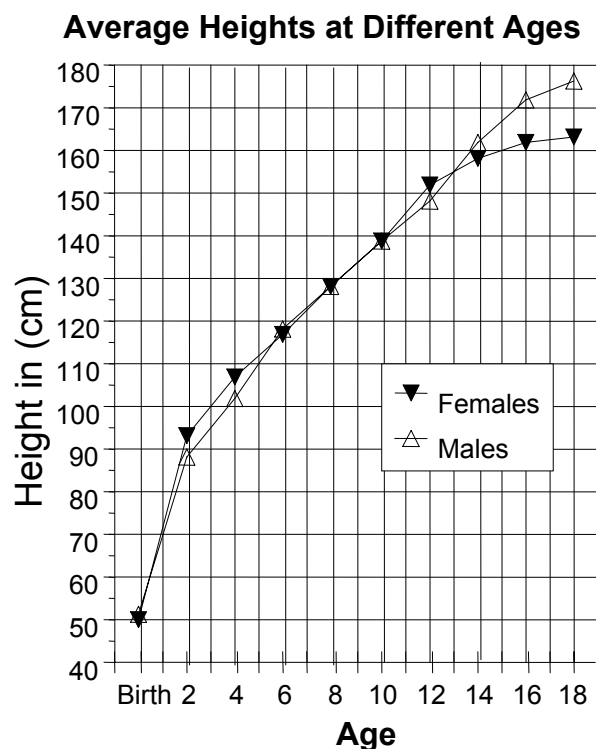


**Tests for Higher Standards
Science Simulation Test for Grades 6-8**

Use this graph of children's heights by age to answer the next two questions.



(LS.1i)

4. From this graph, what is the average height of 3-year-old females?

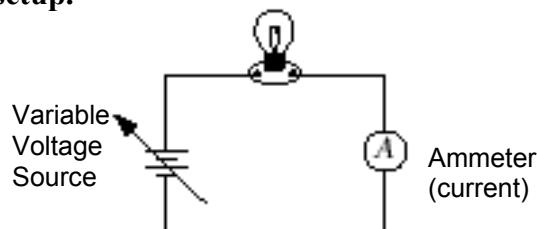
- F 92 cm
- G 95 cm
- H 100 cm
- J 105 cm

(LS.1i)

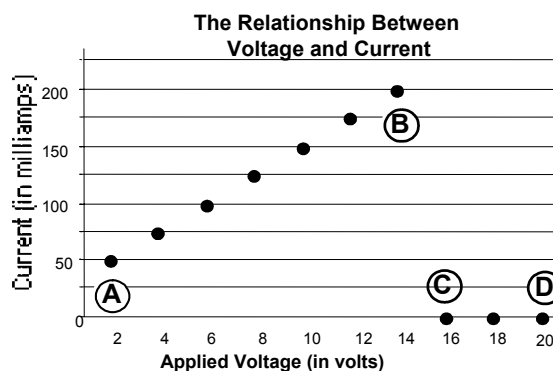
5. From this graph, what is a good estimate of the average height of 20-year-old males?

- A about 163 cm
- B about 165 cm
- C about 170 cm
- D about 178 cm

You performed an electric circuit experiment in science lab to discover how voltage and current are related. The drawing below shows your experimental setup.



You increased the voltage in steps, reading the current after each increase and recorded the result. You plotted your results on the graph shown below. Use the graph to answer the next three questions.



(PS.1e)

6. What is the independent variable in this experiment?

- F current
- G voltage
- H time
- J There is no independent variable.

(PS.1c)

9. Over the range from (A) to (B) the current varies —

- A directly with the voltage.
- B inversely with the voltage.
- C as the square of the voltage.
- D independently of the the voltage.

**Tests for Higher Standards
Science Simulation Test for Grades 6-8**

(LS.5b)

39. A girl found the skull of an animal. She did not know what the animal was but she was sure that it preyed on other animals for its food. What clue led to this conclusion?

- A The eye sockets faced sideways.
- B The skull was much longer than it was wide.
- C There was a projecting ridge along the top of the skull.
- D Four of the teeth were long and pointed.

(LS.6b)

40. Which of the following is produced during photosynthesis for use in storing energy?

- F ADP
- G ACTH
- H lactose
- J glucose

(LS.13a)

41. Which of the following statements about the storage of genetic information in cells is most correct?

- A The cell's genetic information is stored on strands of DNA.
- B The cell's genetic information is stored on RNA molecules, which float in a cell's cytoplasm.
- C The cell's genetic information is located on amino acid chains that stretch from the nucleus to the cell membrane.
- D The cell's genetic information is stored in many of the cell's organelles in the form of protein pairs.

(LS.14a)

42. A characteristic or set of characteristics that affects an organism's chances for survival under different conditions is referred to as:

- F a radiation.
- G a mutation.
- H an adaptation.
- J a regression.

Ecosystems

(6.9a)

43. Which one of these is a producer?

- A rabbit
- B fox
- C bacteria
- D clover

(6.9b)

44. What is the relationship between a food chain and a food web?

- F Food chains are used for land ecosystems and food webs for ocean ecosystems.
- G A food chain is really just one of many paths through a food web.
- H Food chains show just consumers, but food webs also show producers.
- J Food chains always end with decomposers, but food webs never do.